

WAYNE TOMORROW!

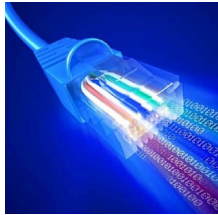
A monthly e-newsletter brought to you by the Wayne County Commissioners

VOL. 1, ISSUE 10

OCTOBER 2020

Wayne Tomorrow! A county-sponsored, community-based collaboration focused on the projects, resources and infrastructure needed to move Wayne County, its people, its culture and its economy into a vibrant future.

Top Stories . . .



County Targets Broadband Projects with CARES, Other Funds



Foundation Launches Revolving Micro-Loan Fund for Businesses

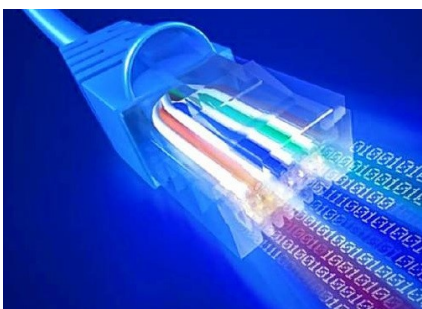


Wayne Memorial Creates Food Pharmacy Program with Grant



2020 Holiday Drive Collects Donations [\(hyperlink to story\)](#)

County Targets Broadband Projects w/CARES, Other Funds



From the very earliest days of the Wayne Tomorrow! initiative, the various working groups identified the need for affordable, high-speed broadband internet service as a top priority.

The partners recognized that high-speed internet connectivity is essential not only for households, schools and hospitals, but on farms, in factories and at small businesses.

The Wayne Economic Development Corp. (WEDCO), in conjunction with the Wayne County Commissioners, have been working with a committee of technology professionals and Essential Management Services LLC, a technology

consultant, to identify ways to expand access to broadband internet in under served parts of the community. As part of a long-term solution, the consultant has been developing a project to build "middle mile" infrastructure that local Internet Service Providers (ISP) can then tap into.

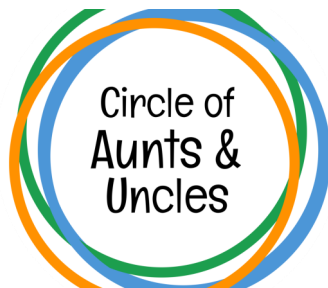
With an investment in equipment by the Appalachian Regional Commission in the form of a grant, the county hopes to encourage private sector investment in the "final mile" that would then provide internet service directly to a residence or business.

The COVID-19 outbreak pushed the need for broadband internet access to a critical level for everything from work to education to health care, as well as for staying connected to the world and each other.

When the federal government released CARES Act funding to the states and eventually to Wayne County, the Commissioners quickly earmarked \$1.4 million for broadband infrastructure.

However, because the CARES funding must be spent to bring more homes and businesses online by the end of this calendar year, the county, in conjunction with the consultant, is working with the local ISPs to identify possible projects they are working on that could be rolled out by year's end with the benefit of CARES Act funding.

Foundation Launches Revolving Micro-Loan Fund



The Wayne County Community Foundation created a new micro revolving loan program aimed at supporting new and growing businesses.

Called the NEPA Circle of Aunts and Uncles, the program has been modeled after the Circle of Aunts and Uncles based in Philadelphia and founded by Judy Wicks, entrepreneur and activist.

The NEPA Circle of Aunts and Uncles is a philanthropic community project to provide low-interest loans and social capital to under-resourced entrepreneurs who are leading new or growing local businesses, in order to co-create a more equitable, compassionate, sustainable,

and vibrant local economy within or impacting Wayne County, PA.

The NEPA Aunts and Uncles will recommend loans for the Wayne County Community Foundation to issue to selected entrepreneurs, as well as provide social capital -- enthusiastically spreading the word about the business to friends and colleagues; becoming customers themselves; providing marketing, management & sales advice; and/or making connections to potential buyers, agents, seasoned colleagues in the same industry, local suppliers, and/or other resources.

The Circle of Aunts and Uncles envisions a prosperous regional economy that supplies basic needs to the local population, works in harmony with the natural ecosystem, supports vibrant, joyful, and inclusive community life and has broad-based business ownership reflecting the demographics of the population.

If you are interested in becoming an "Aunt" or "Uncle" in the circle, or learning more about the project, including how entrepreneurs can apply, [please visit the website.](#)

Judy Wicks spoke as part of the SEEDS (Sustainable Energy Education & Development Support) annual meeting in September about her vision of a global economy comprised of a network of self-reliant and sustainable local economies connected by small-to-small fair trade relationships.



Wayne Memorial Creates 'Food Prescription Program' with Grant



Wayne Memorial Hospital and Wayne Memorial Community Health Centers initiated a "Food Prescription Program," supported by a nearly \$300,000 grant from the AllOne Foundation.

The program, funded for three years, will first be offered to patients of the Carbondale Family Health Center with expectations of extending it to additional WMCHC Family Health Centers in the Honesdale area in the near future.

"It is our hope that, through outreaches such as the Food Prescription Program, complications associated with medical conditions prevalent within our community can be prevented and ultimately result in fewer lengthy hospital stays," stated Wayne Memorial Hospital CEO David Hoff.

The mission of the Food Prescription Program is to provide healthy and nutritious meals to adult patients diagnosed with Diabetes, Chronic Obstructive Pulmonary Disease (COPD) or Congestive Heart Failure (CHF) and have identified themselves as experiencing food insecurity.

According to the US Department of Agriculture, a household with a food insecurity is one where "access to adequate food for active, healthy living is limited by lack of money and other resources." Based on data collected by WMCHC through a survey tool conducted during regular office visits, a need for food subsidies was identified among some of its patient population.

Carol Kneier, MS, RD, LDN, CDE, community health manager at Wayne Memorial Hospital and coordinator of the Food Prescription Program, explained the process. Participants, selected based on diagnosis and the need to overcome food insecurity, will be given a monthly "staple box" containing basic ingredients required to prepare meals tailored to their disease state.

Grocery vouchers to purchase fresh food such as low fat meats, fruit and vegetables will be distributed along with a packet of more than 20 recipes specifically designed to maintain a healthy lifestyle.

The final component, and according to Kneier one of the most essential, is that patients will meet either in-person or via video conference with a Wayne Memorial Registered Dietitian who will provide education and guidance.

"A great deal of preparation has gone into launching the program," said Kneier. "We're grateful to all members of our team and excited to create a healthier lifestyle for our participants."

2020 Holiday Drive Collects Donations Rather Than Toys



The ZIPPER JUNCTION Project hosts The Holiday DONATION Drive in 2020 to brighten the lives of community children in Pike and Wayne Counties.

"We just need to do this", says Jim Zumpone, Chief Visionary and Founder of The ZIPPER JUNCTION project and long-time member of Wayne Tomorrow! "Many families may not even have the ability to put food on their tables or pay their rent, let alone provide some gifts for their children. Our local children deserve happiness this holiday season."

The Holiday DONATION Drive 2020 is a revamp of The Holiday Toy Drive. This year it will be based solely on monetary donations and not the collection of physical gifts. There will be three phases to the program.

From mid-September until the end of October will be the fundraising phase with a goal of \$125,000. Most of this will be raised via the online platform, GoFundMe. When the goal is substantially met, applications will be accepted online from mid-October through mid-November. After vetting of applicants, distribution of funds will be through digital format at the very beginning of December to allow families to purchase online and receive gifts in time for the holiday.

Although The Holiday Donation Drive is their annual gift to the community, The ZIPPER JUNCTION Project invites everyone to help make a difference in the lives of the community's children.

"We need to protect the families and our volunteers as well as follow all guidelines for gatherings and social distancing", said Zumpone. "We have spent countless hours looking at all of the possibilities to make this happen. We even went to social media asking for the opinions of community members regarding our ideas and approach. The consistent answer was, 'we are here to support your efforts in any we can'."

For the 2020 season, in addition to "The Wayne County Ford & Bold Gold Media Holiday Donation Drive Challenge", individuals and businesses are encouraged to host their own events to help generate monetary donations to meet the needed goal during the fundraising phase. Time is of the essence.

Any individual, entity, or business that wishes to help raise the funds should visit www.ZipperJunction.org and clicking on the link to find more information, as well as the link for the GoFundMe page hosting The Holiday Donation Drive.

For questions or to obtain more information about how you can help, call (570) 390-7066 or email info@ZipperJunction.org

Children's Christmas Bureau Sets Dates for 2020 Sign-Up Days

The [Wayne County Children's Christmas Bureau](http://WayneCountyChildrensChristmasBureau.org) administers a seasonal program, which helps hundreds of Wayne County families enjoy their Christmas morning.

The Bureau operates solely on donations and every child helped is from Wayne County therefore, 100% of your donations stay local.

Donation checks are greatly appreciated and should be made payable to WCCCB. Please mail them to the WCCCB, 200 Delaware Street, Honesdale, PA 18431.

Families, organizations, groups, clubs or even a communal gathering of friends can "Adopt A Family" for Christmas by calling or emailing the Wayne County Children's Christmas Bureau at (570) 881-8382 or email info@wcccb.org as soon as possible .

TO REGISTER

Registrations will be accepted at the Chamber of the Northern Poconos, Honesdale Office on Commercial Street: Monday, Oct. 12, 8:30 am to 4 pm; Tuesday, Oct. 13, 11:30 am to 2:30 pm; and Friday, Oct. 16, 3 to 7 pm.

Please enter only through the Community Room entrance. Signs will be posted on the door.

If your family is in need of assistance, please bring the following items: 1) a current utility bill (within last 30 days). A driver's license is not acceptable and no applications will be accepted without proof of county residency; 2) Social Security numbers for all children. (Only one parent can sign up and you must have physical custody of the children); 3) children must be from newborn to age 16.

You will be given your pickup date and time when you sign up. Distribution of gifts will be on Sunday, December 13. Pick up will be at the Park Street Complex at 648 Park Street, Honesdale. Pick-up times will be assigned in advance and are strictly enforced.

www.WayneTomorrow.com